

# TECHNICAL SPECIFICATION

## ASHLEY HARRY HAINE wallcovering / window graphics / acoustic

### DIGITALLY PRINTED wallcoverings

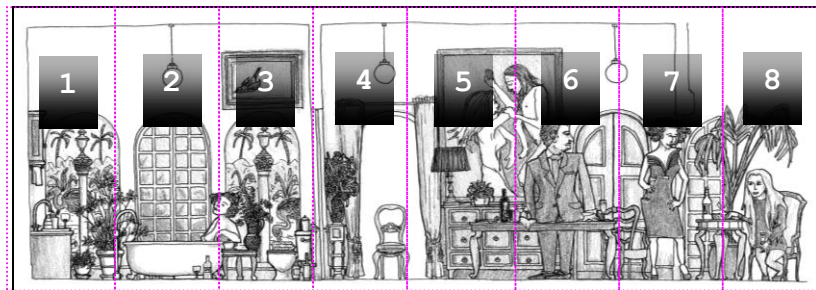
**Product** ASHLEY HARRY HAINE

**Description** Commercial quality vinyl wallcovering. We print onto Digifort vinyl with non woven fabric backing. These designs can also be printed onto other Tektura wallcoverings.

**Weight** Digifort : 350 grammes per square metre.

**Roll Size** Ashley Harry Haine designs are made to order, to fit customer's own wall dimensions. They can also be scaled, stretched or cropped to suit. Each mural is supplied in pre-cut drops. The number, width and height of each drop are determined by the final wall dimensions. Drops are supplied with extra selvedge for overlapping and trimming.

**Example.** In Hot Water design supplied in 8 drops, shown on wall 3m x 8.3m size.



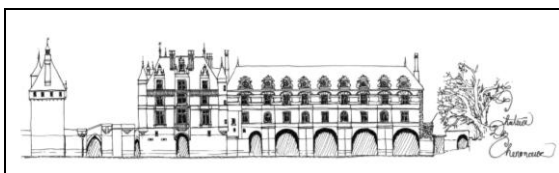
**Maximum Recommended size**

**Ashley Harry Haine designs** can be cropped or scaled up/down. The measurements below are the maximum recommended print size of the hand-drawn image.

**We suggest a white surround is incorporated when measuring up for aesthetic effect.** For large walls, we would increase the blank surround area while keeping the image within the maximum recommended size. This will ensure that the print quality is retained. Print size exceeding recommended maximum will result in deterioration in print quality (eg pixelation)

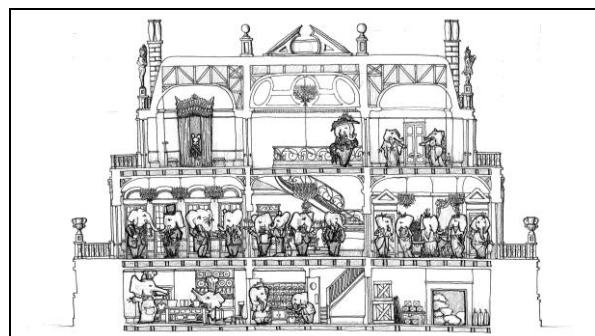
#### Chateau Nouveau

Recommended max image size 1m tall x 4.5m wide.



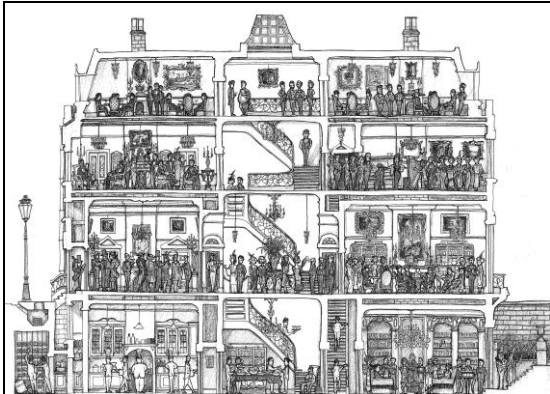
#### Elephants in a Castle

Recommended max image size 3m tall x 5.3m wide.



### In Full Swing

Recommended max image size 3m tall x 4.3m wide



### In Hot Water

This can be printed as a strip - suggested size 1m tall x 2.75m wide.

Recommended max image size 3m tall x 8.3m wide



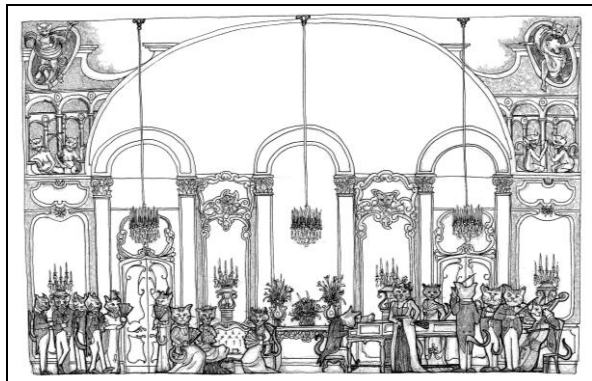
### Leaping Ladies

Recommended max image size 3m tall x 4m wide



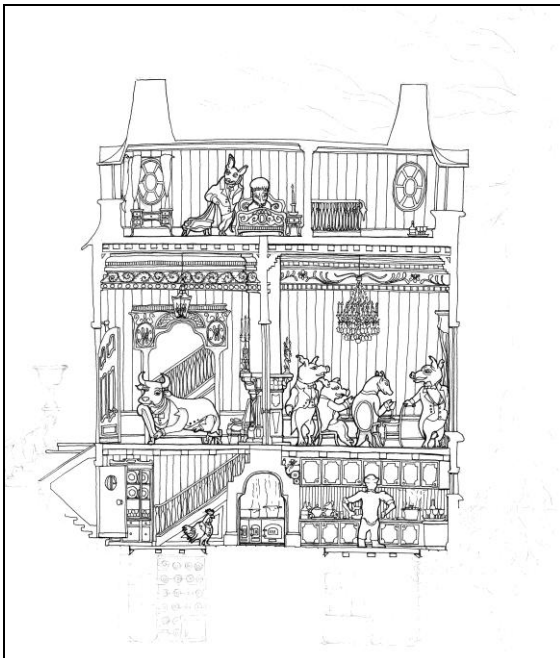
### Mouse Trap

Recommended max image size 3m tall x 4.5m wide.



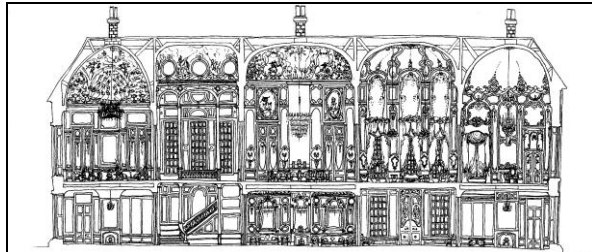
### Porky Blinders

Recommended max image size 3m tall x 2.7m wide.



### Surprise Inheritance

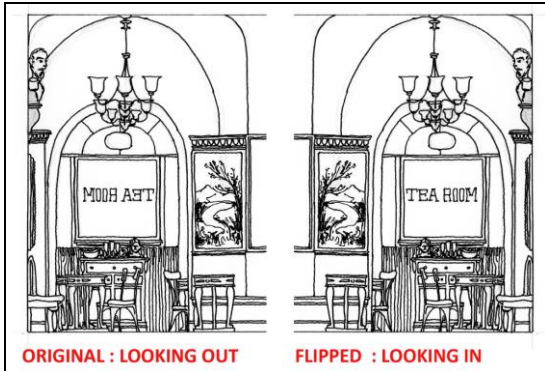
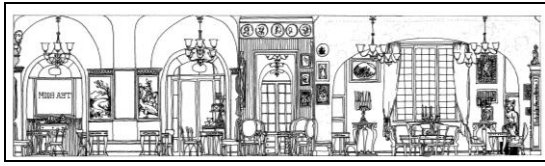
Recommended max image size 3m tall x 6.5m wide



### Tea for Two

This can be printed as a strip - suggested size 1m tall X 3.65m wide.

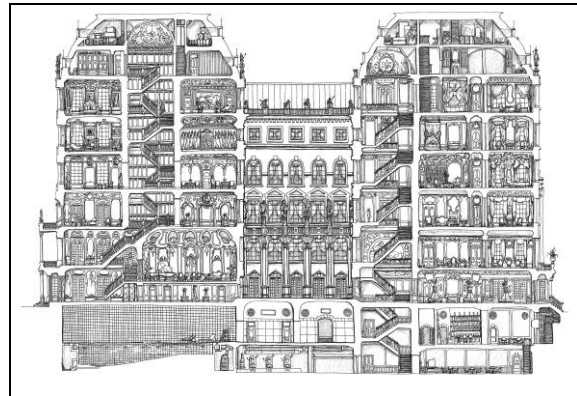
Recommended max image size 3m tall x 11m wide.



NB - In original artwork the words 'Tea Room' are shown backwards to convey the idea that you're inside...looking out. We can flip as required.

### Hide and Seek

Recommended max image size 3m tall x 4.5m wide.



### Colour

**Ashley Harry Haine designs** are printed in monochrome as shown on [tektura.com](http://tektura.com). We can also adjust colours but changes may be subject to artwork charges.

### Fire Rating

(UK) Class 0 and 1 to BS476 part 6 and 7 when adhered to a suitable substrate.  
Euro classification B when adhered to suitable substrate.  
Marine fire rated - please enquire

### Adhesive

Generally Tekfix Plus, though depends on substrate.

### Hanging

Digital wallcovering is printed to order, and each order is unique. Selvege allowance and sequence in which drops should be installed are given in hanging instructions supplied with order. Exact pattern matching is vital. The product should not be reverse hung.

Apply adhesive to wall surface. Carefully smooth wallcovering onto wall surface using a felt roller or felt-covered spatula. Note that allowance will have been made for trimming top and bottom to compensate for uneven walls. Overlap lengths and visually match image. (In many cases crop marks are also included at the top/bottom of each drop as an additional guide to pattern matching). Adjust position if necessary to achieve optimum pattern match. Double cut through using a sharp blade, cutting perpendicular to wall surface to ensure a clean join. Use a seam roller to ensure product is well bonded at the join. Remove any adhesive seepage immediately with warm water.

### Maintenance

Digital vinyls with fabric backing are wipeable and washable, and offer some resistance to knocks. With regular cleaning they will retain their original appearance for many years depending on area of use.

Always carry out a trial in an inconspicuous area first, to ensure cleaning agent suitable. Avoid polishes, abrasive cleaners, solvent or bleach-based cleaners as these will damage the print and vinyl. Slight or moderate soiling can be removed using a combination of mild non-soapy detergent and a soft damp cloth/sponge. Dabbing – certainly not rubbing – is recommended to lift the soil.

It is important to rinse off with clean water and (absorbent) cloth, always cleaning from the skirting level upwards. Individual stains should be removed as quickly as possible. This wallcovering contains antimicrobials which guard against mildew and bacterial growth

<b>Health &amp; Safety</b>	This product is classified as non-hazardous and therefore does not require any special handling. This product does not require special labelling.
<b>Handling/Storage</b>	Store at ambient temperatures away from heat source. Suitable lifting equipment may be required.
<b>Fire Fighting</b>	Any extinguishing media are suitable. Wear self contained breathing apparatus, protective clothing and full face mask. Fumes should be ventilated immediately due to possible liberation of noxious gases.
<b>Ecological</b>	This product is not bio-degradable. Dispose of in accordance with Local Authority regulations or via an authorised contractor.

---

## **DIGITALLY PRINTED Zintra Acoustic panels**

---

<b>Description</b>	Zintra Acoustic 12mm panel / 100% polyester / matte finish.
<b>Weight</b>	2.4kg per square metre.
<b>Size</b>	Each mural is supplied in pre-cut panels. The number, width and height of each panel are determined by the final wall dimensions. Max single panel size 2790mm x 1215mm x 12mm
<b>Fire Rating</b>	Euroclass B
<b>Installation</b>	Adhere to substrate with silicone-based construction adhesive. Alternatively attach with screws, Z-clips, nails, stand-offs, aluminium trim or millwork.
<b>Maintenance</b>	Vacuum to remove dust. Remove spills immediately using a clean damp cloth or with soap and water. Carpet and fabric cleaners can be used but always test an inconspicuous area first.
<b>Health &amp; Safety</b>	This product is classified as non-hazardous and therefore does not require any special handling. This product does not require special labelling.
<b>Handling/Storage</b>	Zintra acoustic panels must be stored in a cool, dry, well ventilated area, out of direct sunlight and away from heat sources. During storage keep covered (eg with polythene sheet) at all times. Panels should be stored horizontally. Pallets should not be stacked.
<b>Fire Fighting</b>	Any extinguishing media are suitable. Wear self contained breathing apparatus, protective clothing and full face mask. Fumes should be ventilated immediately due to possible liberation of noxious gases.
<b>Ecological</b>	This product is not bio-degradable. Dispose of in accordance with Local Authority regulations or via an authorised contractor.

---

---

## DIGITALLY PRINTED window film

---

<b>Description</b>	70 micron polymeric film, frosted or clear.
<b>Weight</b>	22 grammes per square metre
<b>Size</b>	Varies, depending on project
<b>Fire Rating</b>	Euroclass B
<b>Adhesive</b>	Product is self adhesive - permanent pressure sensitive acrylic with Kraft release liner
<b>Installation</b>	Apply the film using a wet application method to saturate the glass, using either proprietary application fluid or a solution of water with a drop of washing up liquid added. Align the film at the top edge using the 'hinge' method. Squeegee the film by applying overlapping strokes from the top centre outwards in each direction and then repeat down the film. A felt squeegee is recommended to avoid scratching. Avoid creasing the film. Once applied the film can be trimmed with a sharp blade. Be aware that water around the edge of the panel will cause dirt ingress, so avoid excess fluid towards the edges of the film.
<b>Maintenance</b>	The film is wipeable and washable. With occasional cleaning it will retain its original appearance for many years depending on area of use. Always carry out a trial in an inconspicuous area first, to ensure cleaning agent suitable. Clean with a mild non-soapy detergent with a soft cloth or sponge. Excess water can be carefully removed with a soft rubber squeegee. Be aware that any grit or rough edges on the squeegee may cause scratching.
<b>Health &amp; Safety</b>	This product is classified as non-hazardous and therefore does not require any special handling. This product does not require special labelling.
<b>Handling/Storage</b>	Store at ambient temperatures away from heat source. Suitable lifting equipment may be required.
<b>Fire Fighting</b>	Any extinguishing media are suitable. Wear self contained breathing apparatus, protective clothing and full face mask. Fumes should be ventilated immediately due to possible liberation of noxious gases.
<b>Ecological</b>	This product is not bio-degradable. Dispose of in accordance with Local Authority regulations or via an authorised contractor.